

FLINT, MICHIGAN

AL-618 (FAA)

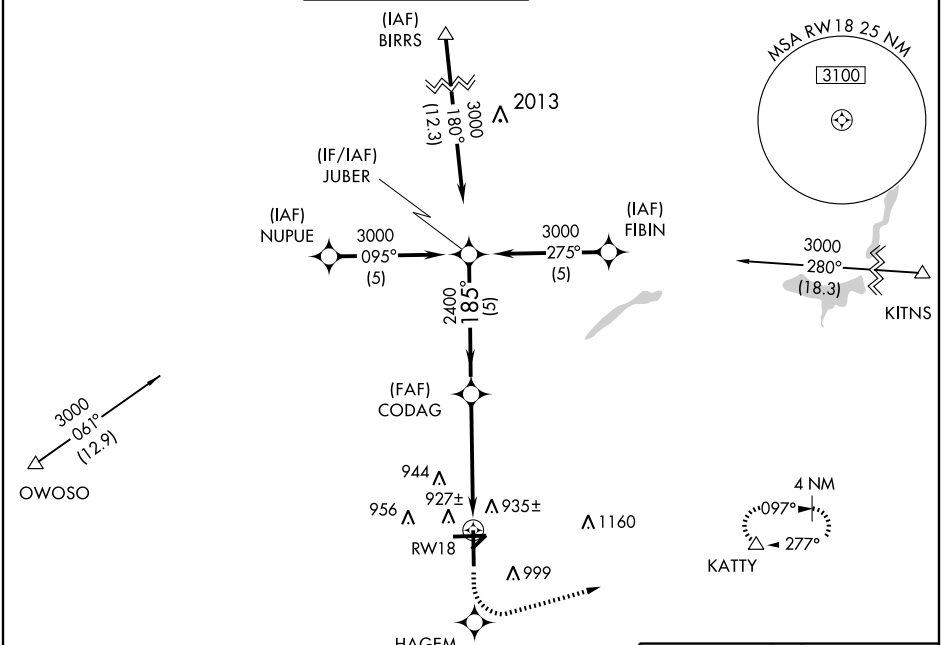
# RNAV (GPS) RWY 18

FLINT / BISHOP INTL (FNT)

APP CRS <b>185°</b>	Rwy ldg <b>7649</b>
	TDZE <b>779</b>
	Apt Elev <b>782</b>

**NA ASR** GPS or RNP -0.3 required. DME/DME RNP-0.3 NA. MISSED APPROACH: Climb to 3000 via 185° course to HAGEM WP then left turn via 081° course to KATTY WP and hold.

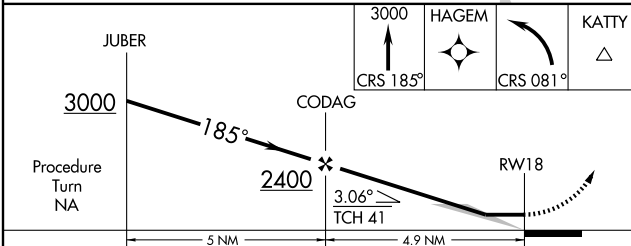
ATIS <b>133.15</b>	FLINT APP CON * <b>118.8 257.9</b>	FLINT TOWER * <b>126.3 (CTAF) 0257.9</b>	GND CON <b>121.9</b>	CLNC DEL <b>121.75</b>	UNICOM <b>122.95</b>
-----------------------	---------------------------------------	---------------------------------------------	-------------------------	---------------------------	-------------------------



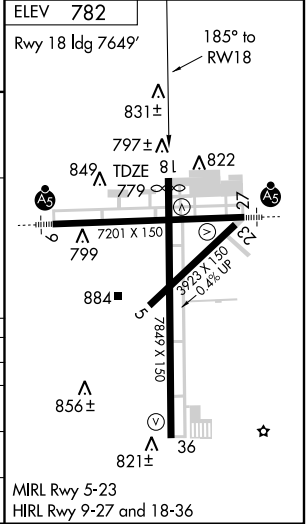
EC-1, 13 MAR 2008 to 10 APR 2008

EC-1, 13 MAR 2008 to 10 APR 2008

CAUTION: Brightly lighted parking lot 4000' east of approach end of Rwy 27 can easily be confused for Rwy 27.



CATEGORY	A	B	C	D
GLS PA DA	NA			
LNAV/DA VNAV	NA			
LNAV MDA	1180 - 1	401 (400-1)	1180 - 1½	401 (400-1½)
CIRCLING	1280 - 1 498 (500-1)	1300 - 1 518 (600-1)	1300 - 1½ 518 (600-1½)	1340 - 2 558 (600-2)



FLINT, MICHIGAN  
Orig 07130

42°58'N - 83°45'W

# RNAV (GPS) RWY 18